

10AQS/1SS+AQW

Front panel sealing • variable heights



DISTINCTIVE FEATURES

Front panel sealing to IP67

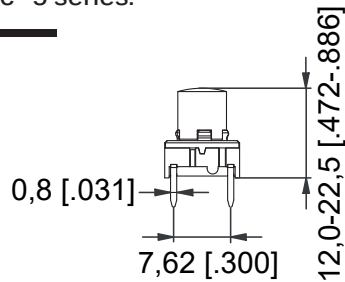
Excellent illumination with 10AQS

Variable total heights

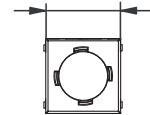


SWITCH SPECIFICATIONS : see Multimec™ 5 series.

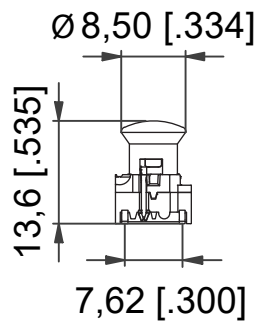
5E+1SS - TH



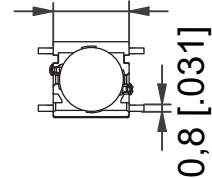
Max 10,3 [.406]



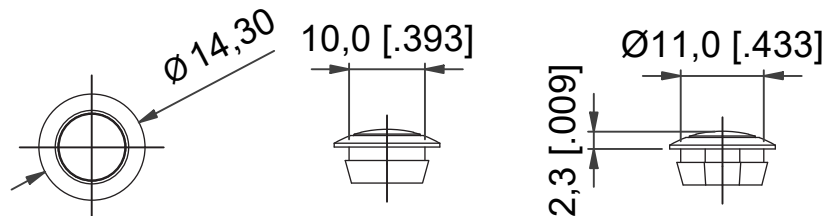
5G+10AQS - SMD W/LED



Max 10,3 [.406]

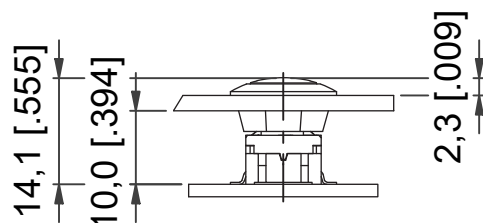


AQW



2,3 [.009]

5G+10AQS+AQW



The company reserves the right to change specifications without notice. All tolerance if not otherwise specified $\pm 0.2\text{mm}$.

10AQS/1SS+AQW

Front panel sealing • variable heights



GENERAL SPECIFICATIONS

- Front panel sealing: IP67 to IEC 60529
- Mechanical lifecycle (sealing) : 500,000 activations
- Recommended panel thickness: 2.0 mm



MATERIALS

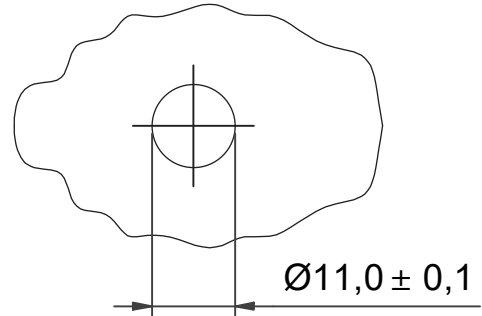
- Sealing: silicone
- 10AQS cap: polycarbonate (PC) UL94H2
- 1SS cap: polyamide UL94V2

DISCLAIMER:

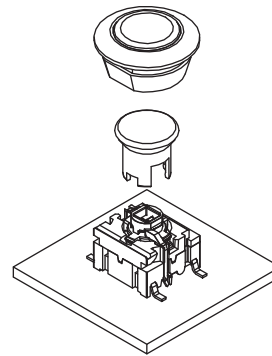
AQW sealing is produced in silicone. This material is not suitable for all industries. Please contact us for a check of chemical resistance for your specific environment.



PANEL CUT-OUT



ASSEMBLY



NOTE:

Lowest behind the panel height possible with this solution is 5E+1SS09-12.0+AQW that has the behind the panel height of 9.0 mm.

10AQS/1SS+AQW

Front panel sealing • variable heights



BUILD YOUR PART NUMBER

ILLUMINATED

[]	[]	[]	[]	10AQS	[]	AQW	[]	[]
SERIES				CAP	COLOR	SEALING		INNER
5G					16 Frosted white		09 black	16 frosted white
	MOUNTING		LED					
	TH9 Through-hole		02 blue		82 red			
	SH9 Surface mount		22 green		2242 green/yellow			
		ACTUATION FORCE	29 high intensity green		8222 red/green			
		20 2.0 N	42 yellow		8242 red/yellow			
		35 3.5 N	61 white					
		65 6.5 N						
		20Q 2.0 N quiet						

NON-ILLUMINATED

[]	[]	[]	1SS	[]	[]	AQW	[]	[]
SERIES	MOUNTING		CAP	COLOR	HEIGHT	SEALING		INNER
5E	TH9 Through-hole			09 black	12.0 12 mm		09 black	02 green
	SH9 Surface mount				15.0 15 mm			03 grey
		ACTUATION FORCE			16.0 16 mm			08 red
		20 2.0 N			19.0 19 mm			36 signal white
		35 3.5 N			22.5 22.5 mm			
		65 6.5 N						
		20Q 2.0 N quiet						



ABOUT THIS SERIES

- ⚠ **Notice :** If an application requires both non-illuminated and illuminated AQW solution, 10AQS cap can be used for both to ensure the same behind the panel height.
- ⚠ **Notice :** Switches, caps and sealings are ordered separately.